



International Seminar

Nantes, France

Organisation of social welfare in the
canton of Zurich

The audit of social services at the
Dental University Institute

Sandro Pargätzi
Renato-Carlo Müller

Kanton Zürich www.zh.ch



03.02.2012

Finanzkontrolle www.fk.zh.ch



Nantes 20th October 2016



Constitution of the canton of Zurich

- **Text search «social»:** 17 hits in 9 areas
 1. Preamble
 2. Principles of good governance
 3. Legal equality
 4. Social targets of the canton
 5. Preliminary proceedings concerning legislation
 6. Social Insurance Court
 7. Social economy
 8. Definition of social welfare
 9. Education





Definition of social welfare

«Both canton and municipalities shall ensure that **persons in highly vulnerable situations**, which they cannot handle by themselves, are provided with shelter and vital means. The canton and the municipalities promote vocational retraining and further education of **unemployed persons** and their reintegration in working life. To combat poverty and social distress the canton and the municipalities promote the concept of helping people help themselves.»





Legal basis

- **Cantonal**
 - Social Assistance Act and Regulation
 - Delegation of social welfare to the municipalities
 - Introductory Act on protection of children and adults
 - Implementation of the provisions contained in the Civil Code
 - Law on political rights
 - Selection of social and welfare authorities
 - Law on Municipalities
 - Organisation of social and welfare authorities
- **Local**
 - Municipal Code





Organisation

- Fulfilment of social tasks (local)
 - Municipal or social welfare authorities
 - Authorities responsible for protecting children and adults
 - Supervision / administration of justice (regional and local)
 - Department of Justice and Home Affairs
 - District council
 - District Courts and High Court





Organisation

- Tasks of cantonal social welfare offices
 - Further development and coordination of social services; implementation of related applicable provisions of Federal law
 - Consultation, support and supervision of municipalities
 - Subsidies to institutions for adults
- Tasks of other cantonal authorities
 - Youth welfare and victim assistance
 - Protection of children and adults
 - Provide support to offenders





Organisation

- Recommendation of social policy objectives for welfare authorities (cantonal manual on social welfare)
 - Recordings and debates on social concerns, the highlighting of possible solutions; development of social projects
 - Raise public awareness and raise awareness also among specialized organisations on social issues
 - Networking with municipal authorities, regional employment centres, vocational guidance, youth and family counselling, disability insurance offices as well as with other (private) social welfare organisations
 - Support to private social organisations and services





The audit of social services at the Dental University Institute

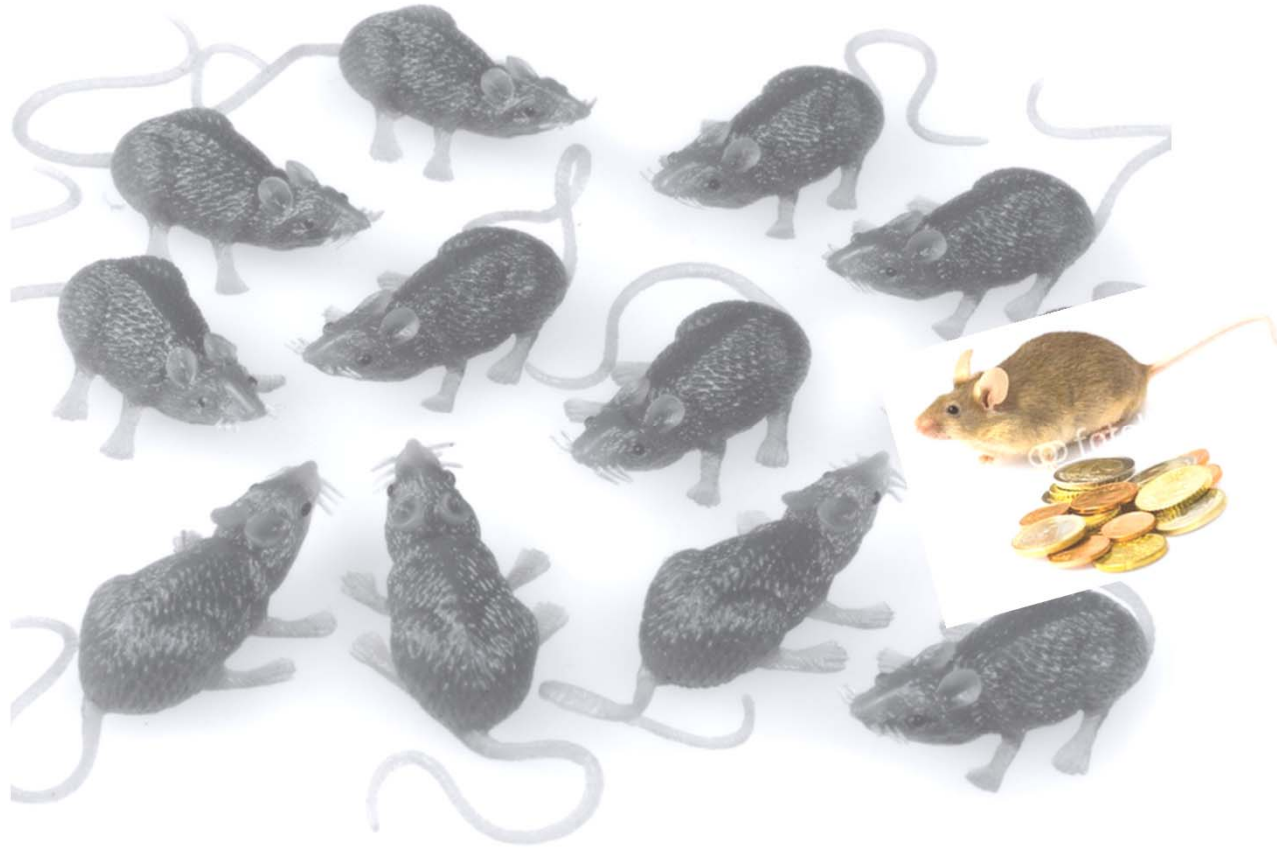


Kanton Zürich www.zh.ch



03.02.2012

Finanzkontrolle www.fk.zh.ch



Nantes 20th October 2016



Kanton Zürich www.zh.ch



03.02.2012

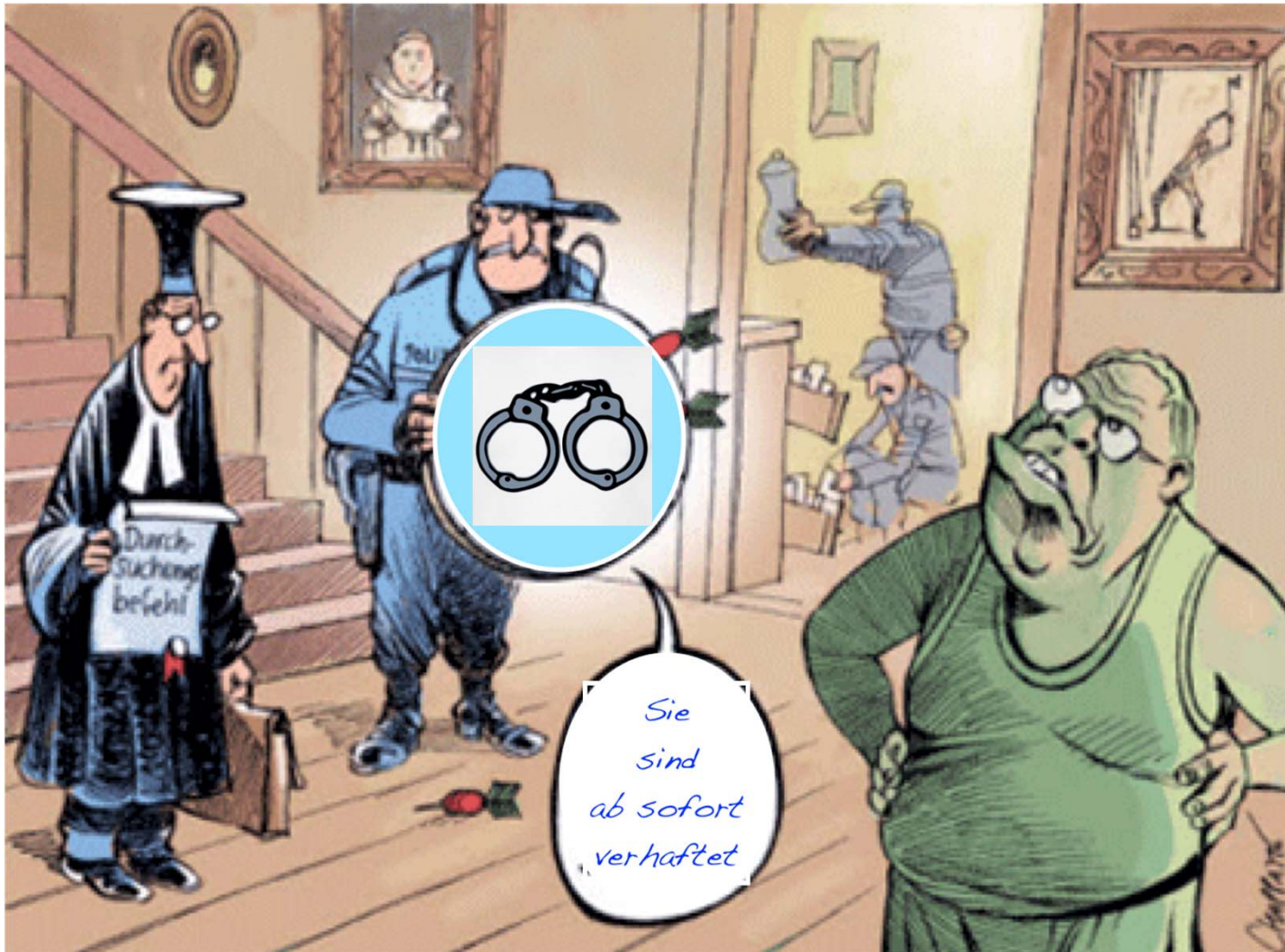
Finanzkontrolle www.fk.zh.ch



Nantes 20th October 2016

10

Empfangsschein / Récépissé / Ricevuta	Einzahlung Giro	Versement Virement	Versamento Girata
<p>Einzahlung für/Versement pour/Versamento per SELDWYLA BANK 8021 ZUERICH 1</p> <p>Zugunsten von/En faveur de/A favore di CH38 0888 8123 4567 8901 2 MUSTER AG BAHNHOFSTRASSE 5 2 8001 ZUERICH</p> <p>Konto/Compte/Conto 80-939-3 3 CHF 4</p> <p>8479.25</p> <p>Einbezahlt von/Versé par/Versato da</p> <p>5</p> <p>Die Annahmestelle L'office de dépôt L'ufficio d'accettazione</p>	<p>Einzahlung für/Versement pour/Versamento per SELDWYLA BANK 8021 ZUERICH 1</p> <p>Zugunsten von/En faveur de/A favore di CH38 0888 8123 4567 8901 2 MUSTER AG BAHNHOFSTRASSE 5 2 8001 ZUERICH</p> <p>Konto/Compte/Conto 80-939-3 3 CHF 4</p> <p>8479.25</p> <p>303</p>	<p>Zahlungszweck/Motif versement/Motivo versamento Rechnung Nr. 7496 5</p> <p>Einbezahlt von/Versé par/Versato da</p> <p>5</p>	<p>02.2005</p> <p>44102 PF</p> <p>000000000000001234567890128+ 0708888 4> 800009393> a</p>





Useful lessons for the audit

- A risk-based audit approach throughout the process in a consistent manner
- More audits relating to the awareness of supervision and control duties
- Clarify irregularities which arise over time in work processes
- Analysis of backlogs
- Decentralised organisation of the patient accounting
- Clear reporting and consistent follow-up
-



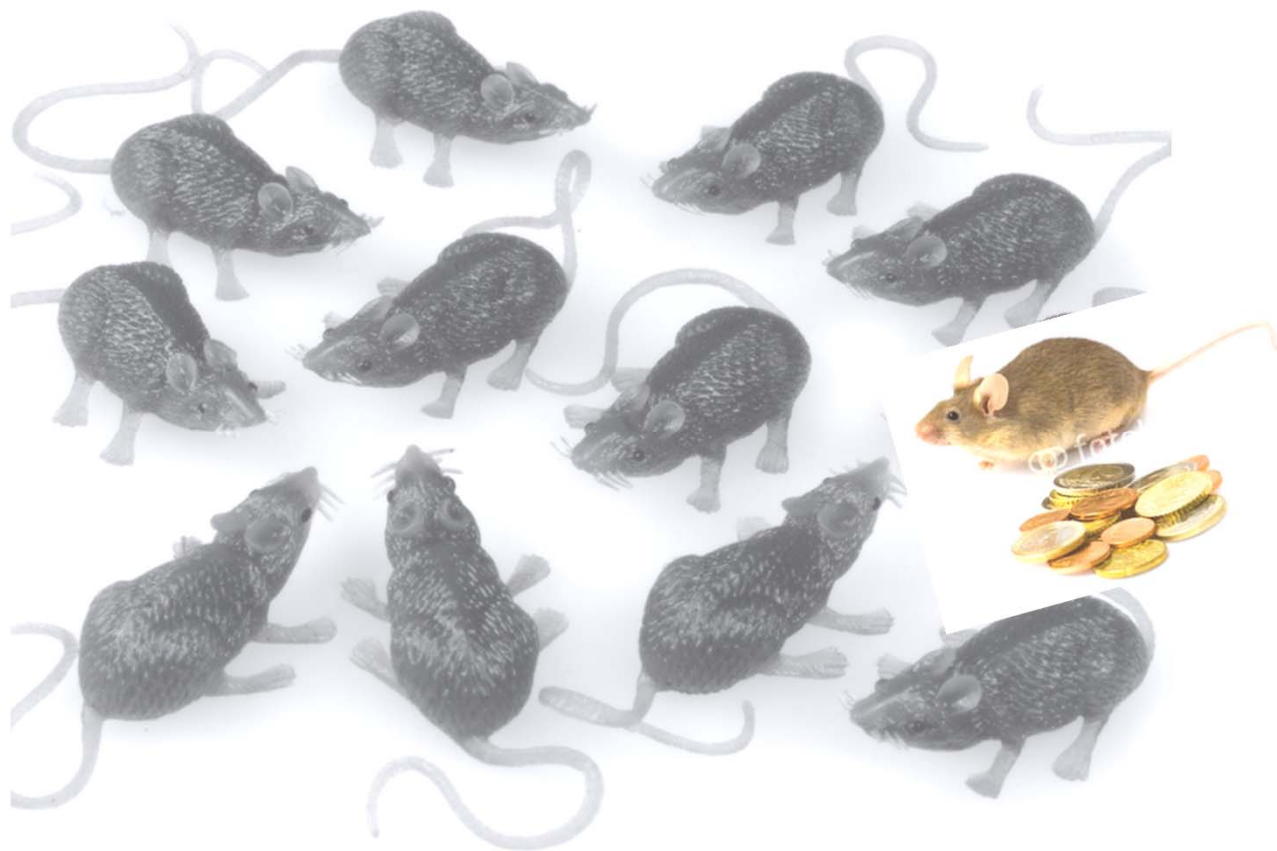


Kanton Zürich www.zh.ch



03.02.2012

Finanzkontrolle www.fk.zh.ch



Nantes 20th October 2016